

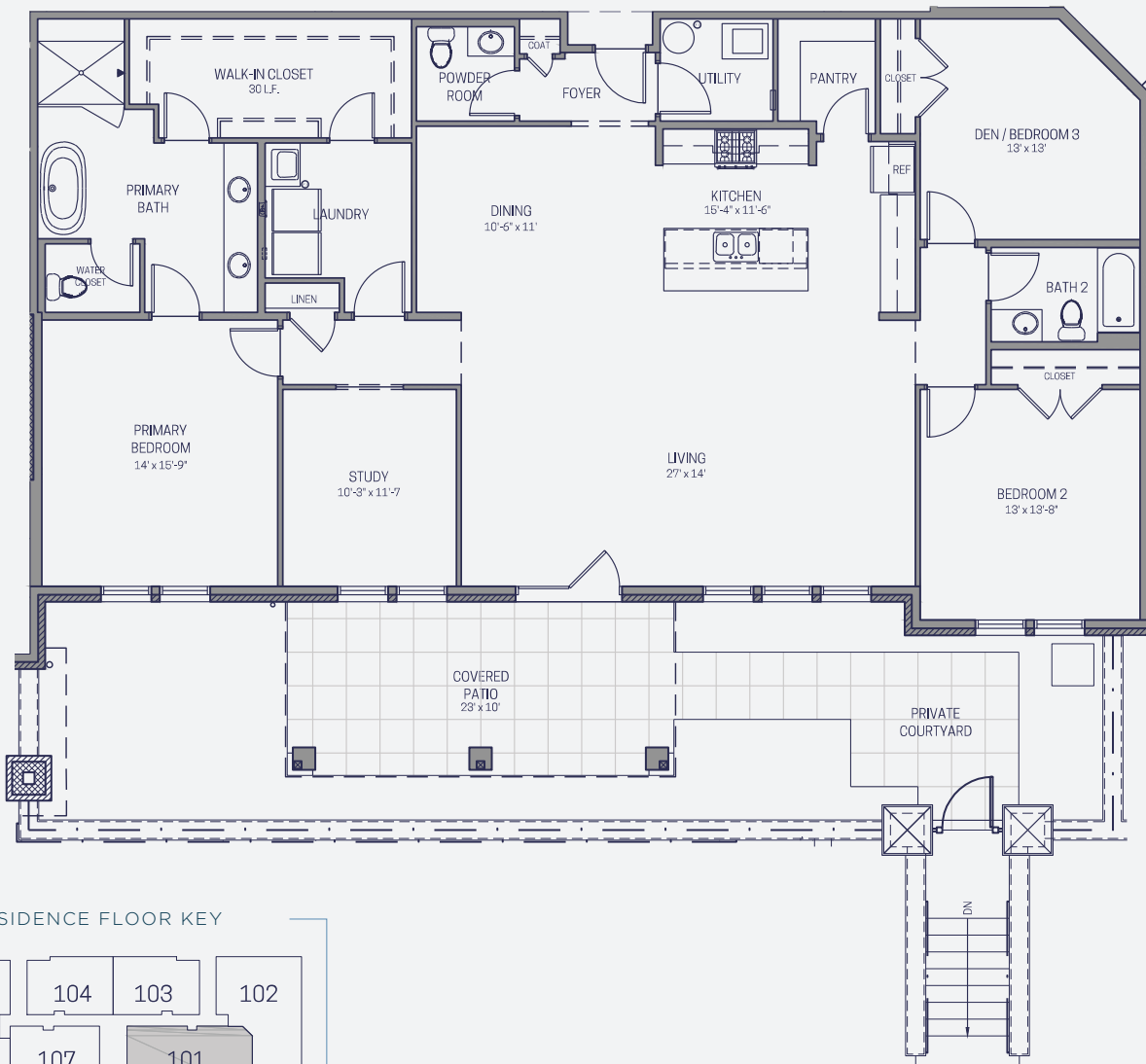


# THE WICKS

— • AT THE VINTAGE CLUB • —

## LUXURY LIFESTYLE RESIDENCES

### — FIRST FLOOR — THE PRESTON Suite 101



Plans are for illustrative purposes only  
and subject to changes by builder.

- 3 Bedrooms, 2.5 Baths plus Study
- Courtyard and Covered Patio
- 2203 Interior Square Feet
- 790 Outdoor Square Feet



LIFE IN A WHOLE NEW LIGHT

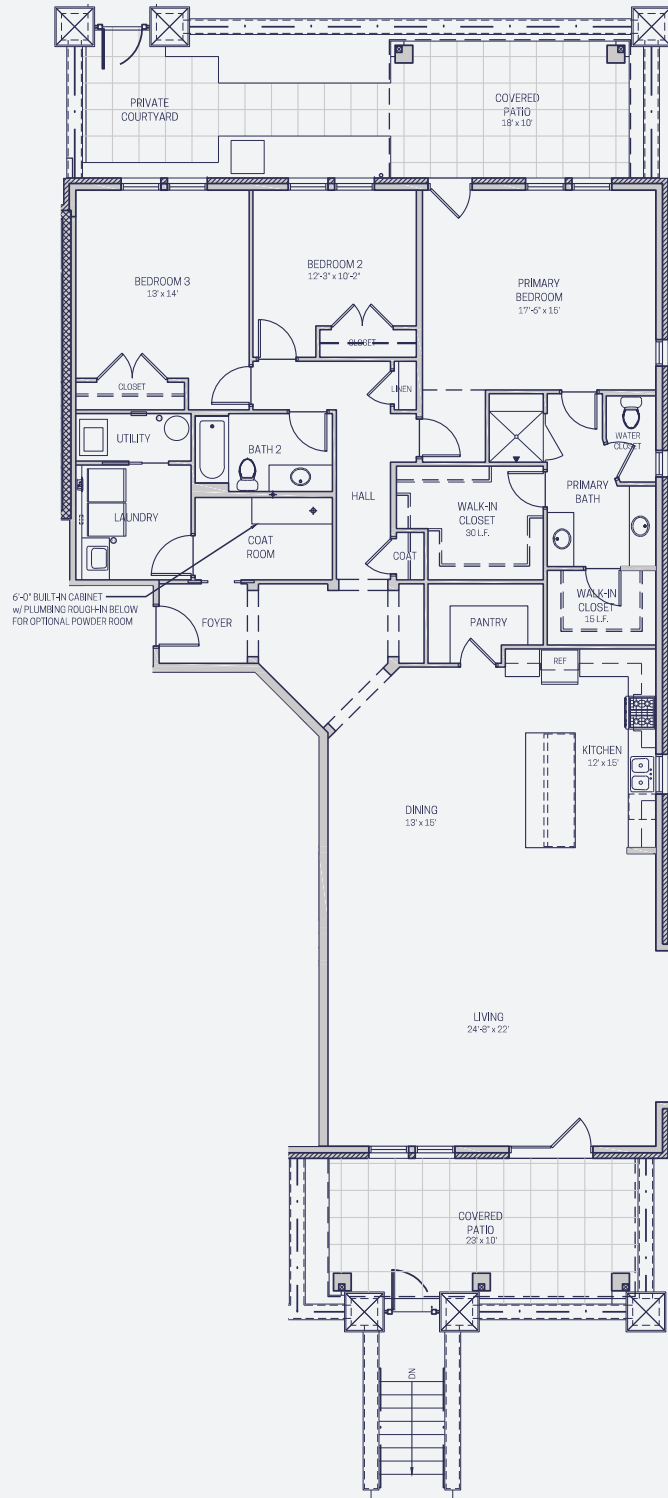
[lrll@traditionsgroup.com](mailto:lrll@traditionsgroup.com) | 513.498.7997 | [traditionsgroup.com](http://traditionsgroup.com)



# THE WICKS

— • AT THE VINTAGE CLUB • —

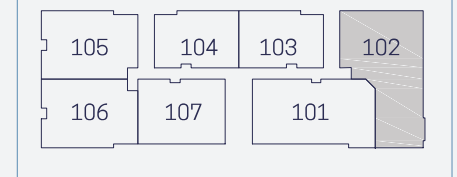
## LUXURY LIFESTYLE RESIDENCES



### — FIRST FLOOR — THE SOFIA Suite 102

- 3 Bedrooms, 2.5 Baths plus Study
- Courtyard and 2 Covered Patios
- 2445 Interior Square Feet
- 725 Outdoor Square Feet

#### RESIDENCE FLOOR KEY



Plans are for illustrative purposes only  
and subject to changes by builder.



LIFE IN A WHOLE NEW LIGHT

lroll@traditionsgroup.com | 513.498.7997 | traditionsgroup.com

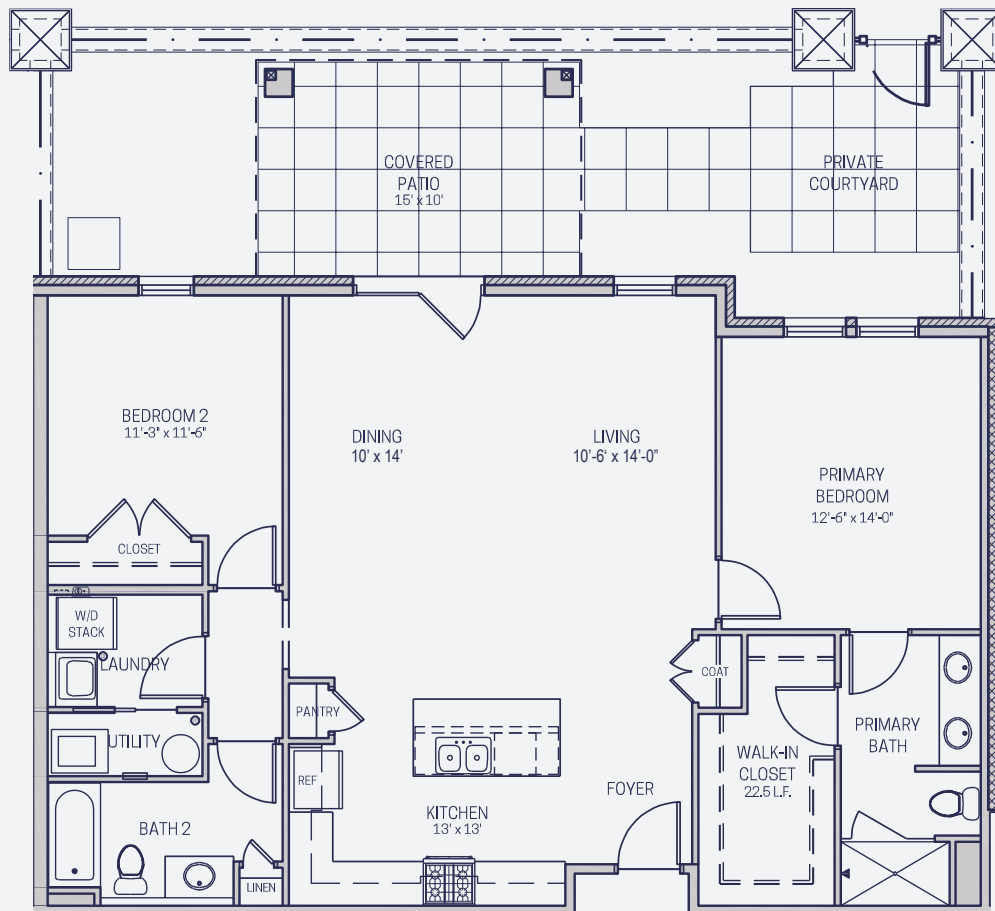


# THE WICKS

— • AT THE VINTAGE CLUB • —

## LUXURY LIFESTYLE RESIDENCES

### — FIRST FLOOR — THE PIPER Suite 103



Plans are for illustrative purposes only  
and subject to changes by builder.



- 2 Bedrooms, 2 Baths
- Courtyard and Covered Patio
- 1278 Interior Square Feet
- 492 Outdoor Square Feet



LIFE IN A WHOLE NEW LIGHT

[lrll@traditionsgroup.com](mailto:lrll@traditionsgroup.com) | 513.498.7997 | [traditionsgroup.com](http://traditionsgroup.com)

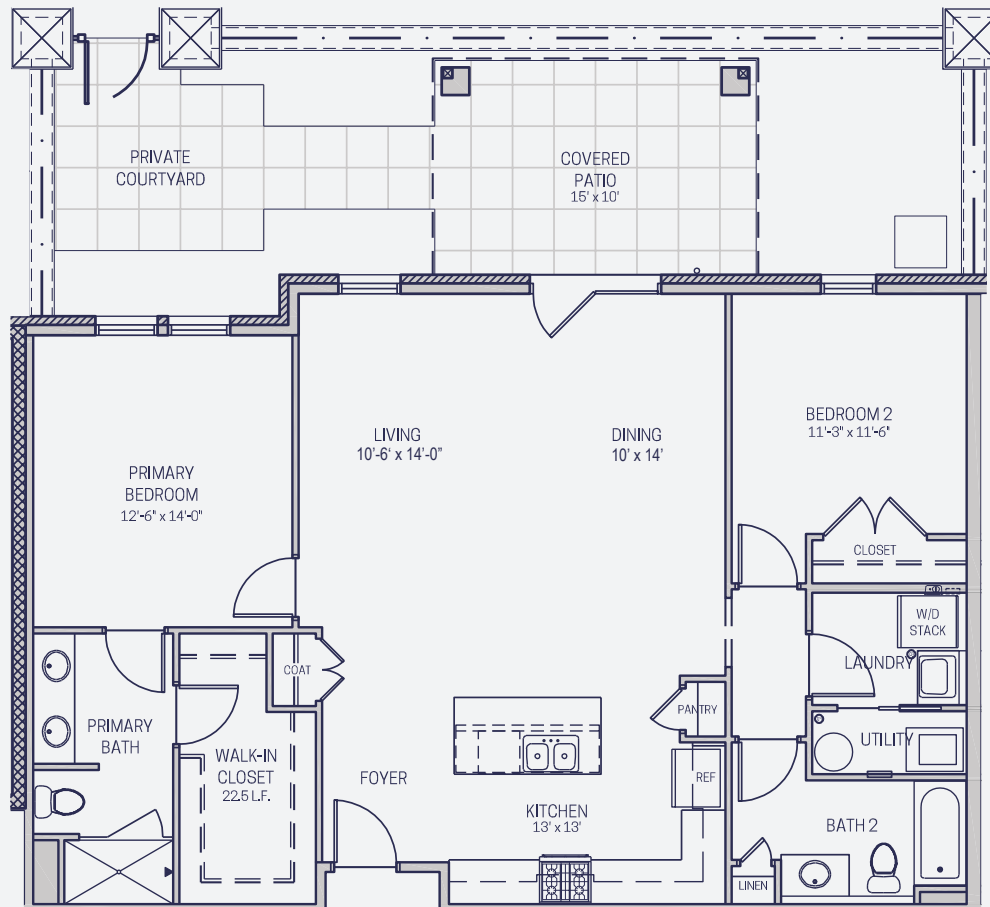


# THE WICKS

— • AT THE VINTAGE CLUB • —

## LUXURY LIFESTYLE RESIDENCES

### — FIRST FLOOR — THE PIPER Suite 104



Plans are for illustrative purposes only  
and subject to changes by builder.



- 2 Bedrooms, 2 Baths
- Courtyard and Covered Patio
- 1278 Interior Square Feet
- 492 Outdoor Square Feet



LIFE IN A WHOLE NEW LIGHT

[lrll@traditionsgroup.com](mailto:lrll@traditionsgroup.com) | 513.498.7997 | [traditionsgroup.com](http://traditionsgroup.com)

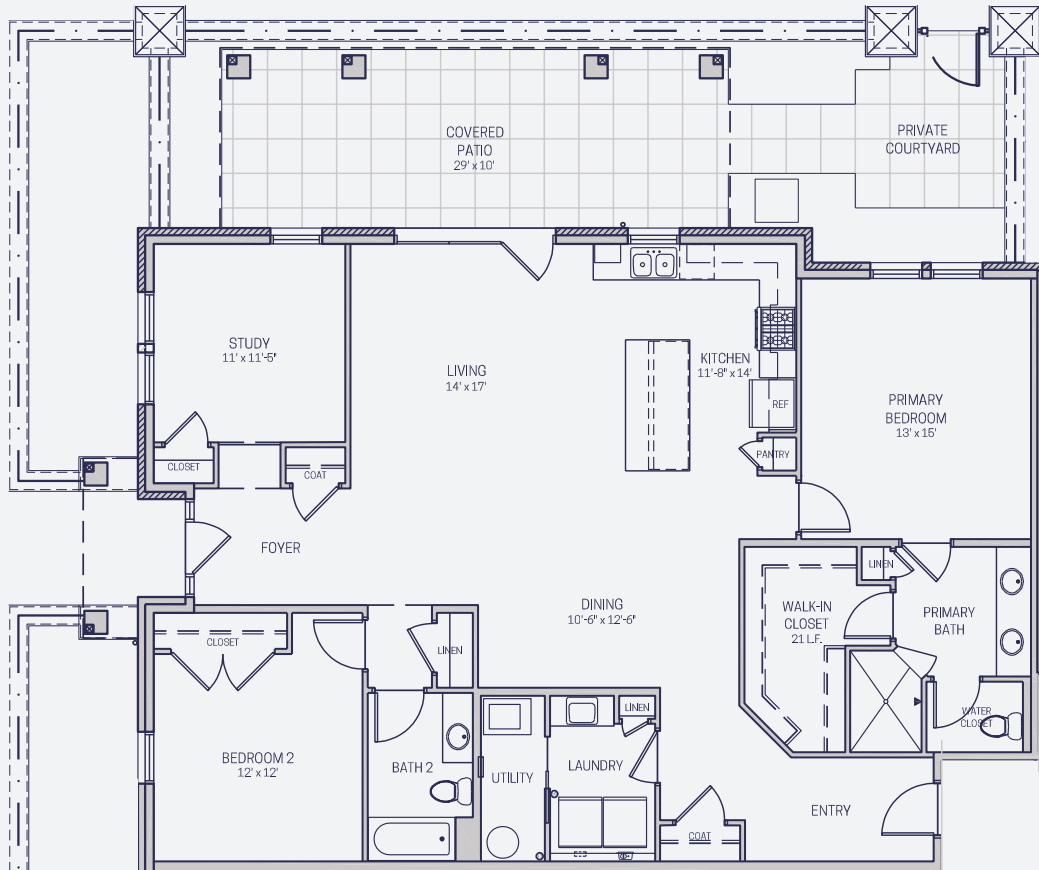


# THE WICKS

— • AT THE VINTAGE CLUB • —

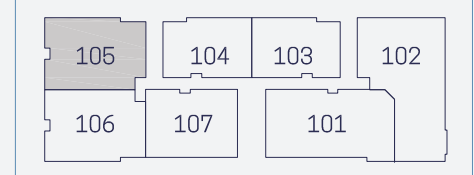
## LUXURY LIFESTYLE RESIDENCES

### — FIRST FLOOR — THE EVERETT Suite 105



Plans are for illustrative purposes only  
and subject to changes by builder.

#### RESIDENCE FLOOR KEY



- 2 Bedrooms, 2 Baths plus Study
- Courtyard and Covered Patio
- 1725 Interior Square Feet
- 542 Outdoor Square Feet



LIFE IN A WHOLE NEW LIGHT

[lrroll@traditionsgroup.com](mailto:lrroll@traditionsgroup.com) | 513.499.7997 | [traditionsgroup.com](http://traditionsgroup.com)



# THE WICKS

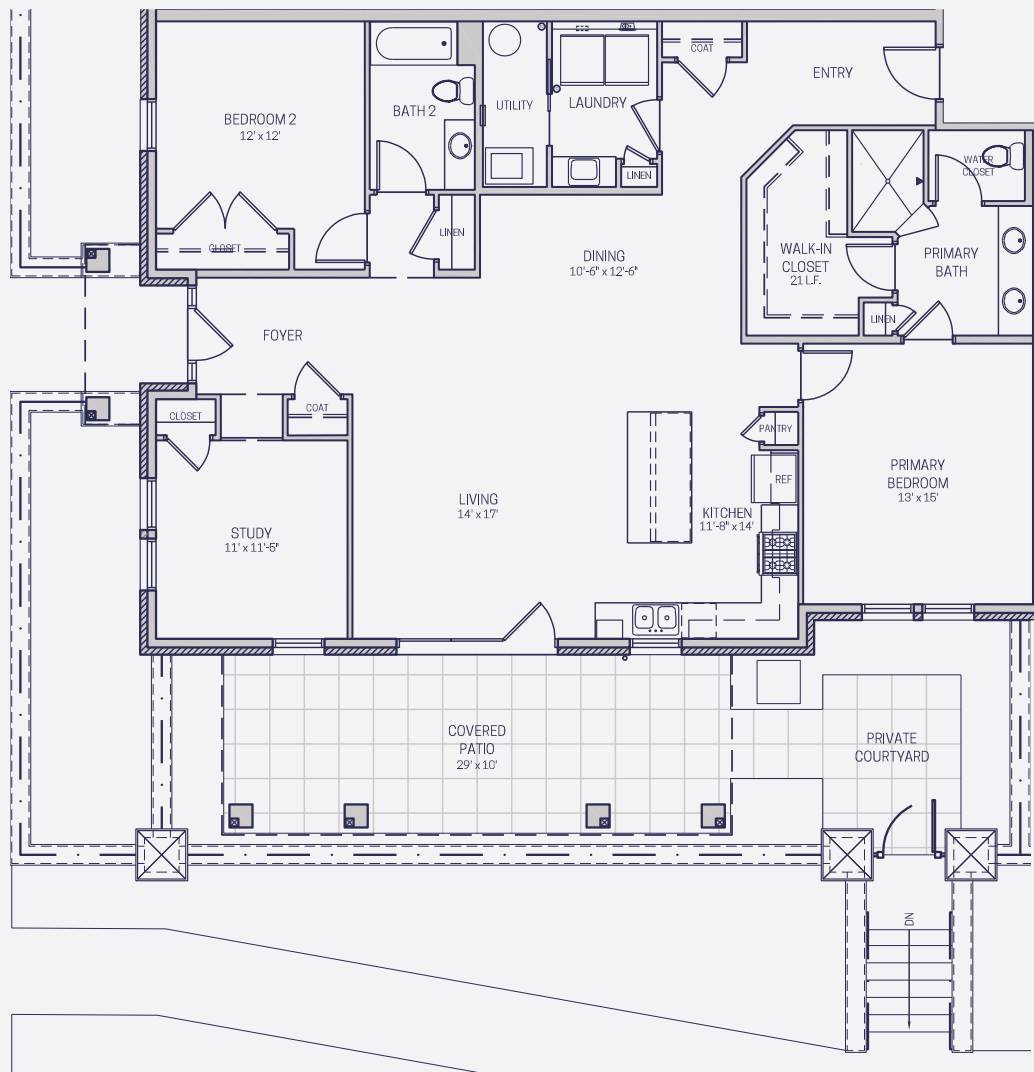
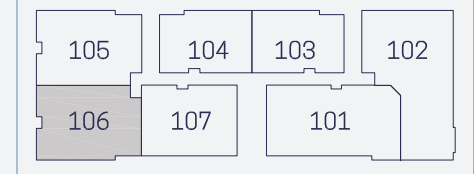
— • AT THE VINTAGE CLUB • —

## LUXURY LIFESTYLE RESIDENCES

### FIRST FLOOR THE EVERETT

Suite 106

#### RESIDENCE FLOOR KEY



Plans are for illustrative purposes only and subject to changes by builder.

- 2 Bedrooms, 2 Baths plus Study
- Courtyard and Covered Patio
- 1725 Interior Square Feet
- 551 Outdoor Square Feet



LIFE IN A WHOLE NEW LIGHT

[lrll@traditionsgroup.com](mailto:lrll@traditionsgroup.com) | 513.498.7997 | [traditionsgroup.com](http://traditionsgroup.com)



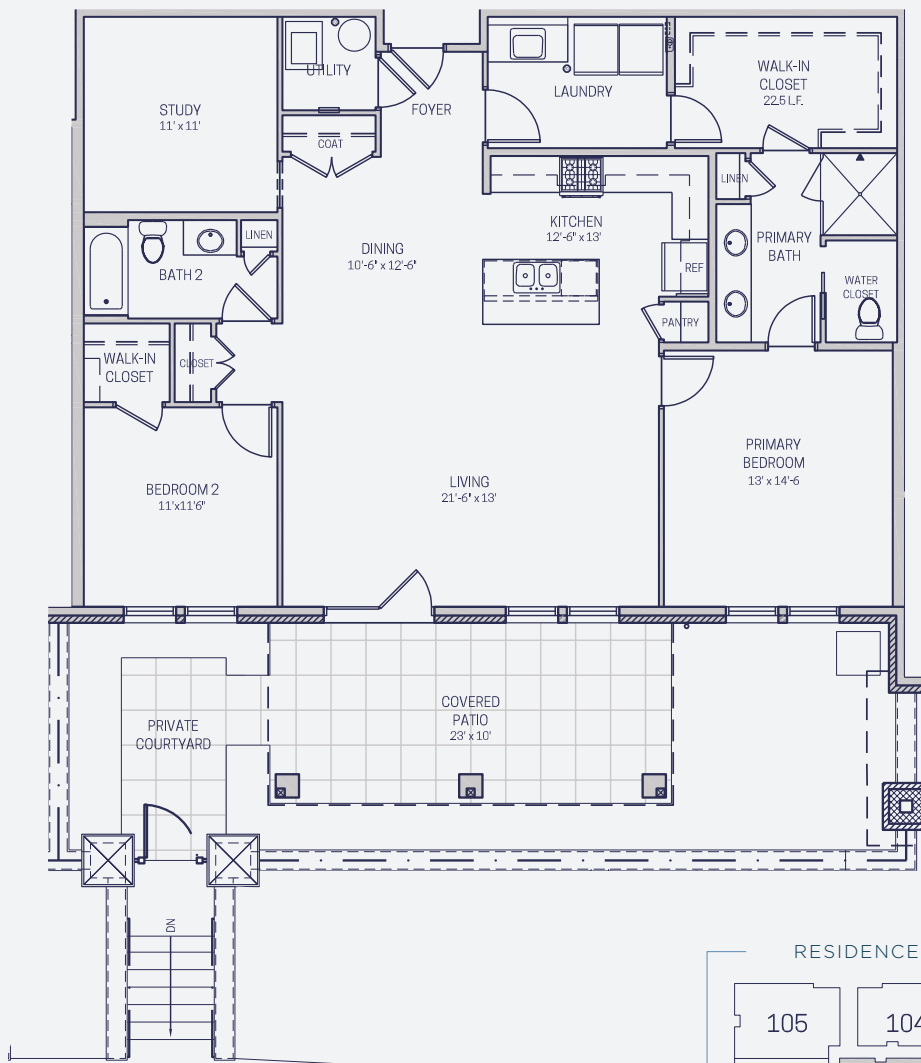
# THE WICKS

— • AT THE VINTAGE CLUB • —

## LUXURY LIFESTYLE RESIDENCES

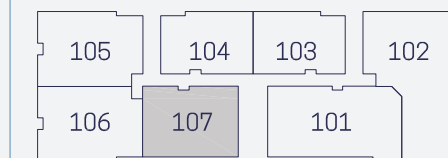
### FIRST FLOOR THE QUINN

Suite 107



Plans are for illustrative purposes only  
and subject to changes by builder.

#### RESIDENCE FLOOR KEY



- 2 Bedrooms, 2 Baths plus Study
- Covered Patio and Courtyard
- 1547 Interior Square Feet
- 607 Outdoor Square Feet



LIFE IN A WHOLE NEW LIGHT

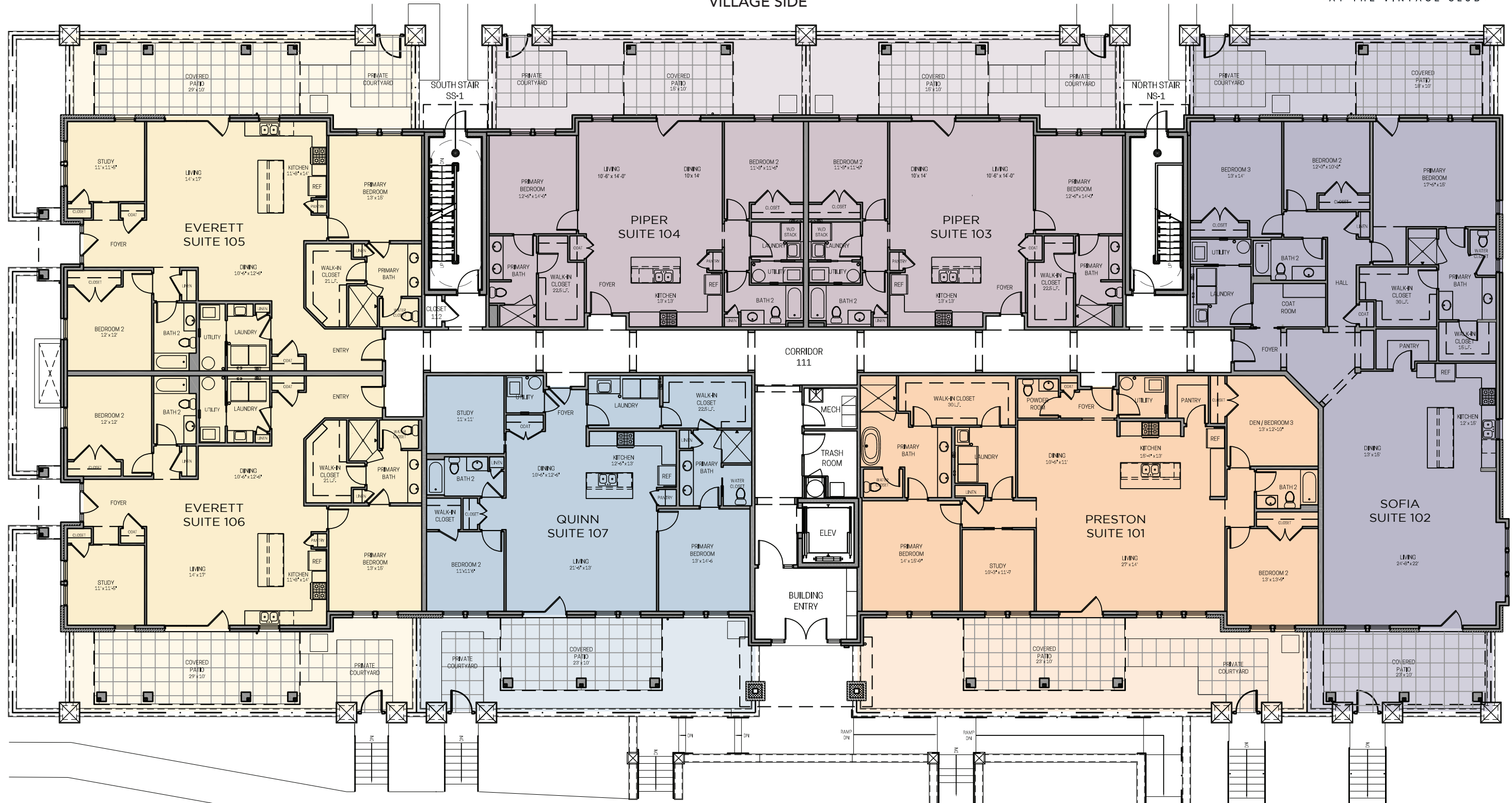
[lrll@traditionsgroup.com](mailto:lrll@traditionsgroup.com) | 513.498.7997 | [traditionsgroup.com](http://traditionsgroup.com)



THE WICKS

• AT THE VINTAGE CLUB •

VILLAGE SIDE



RESIDENTIAL SIDE FACING VINTAGE CLUB

H1  
FIRST FLOOR

210 VINTAGE CLUB DRIVE

Plans are for illustrative purposes & are subject to change at any time by builder. June 2025